

MLS Area BA

Residential Statistics



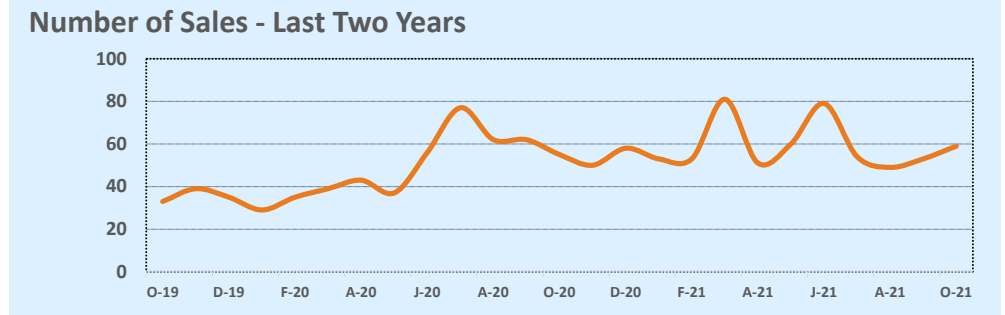
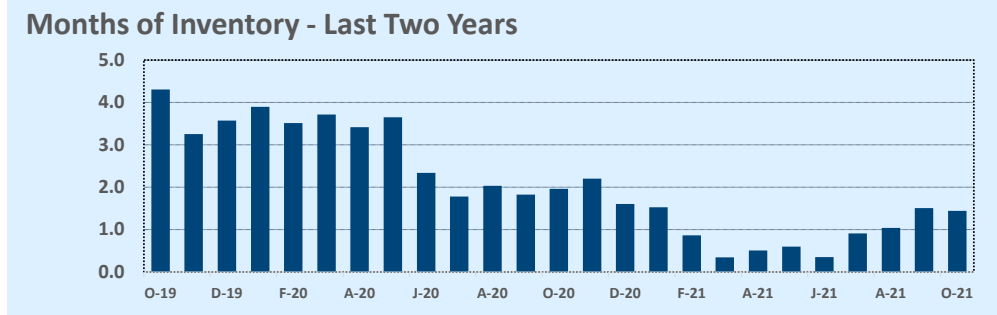
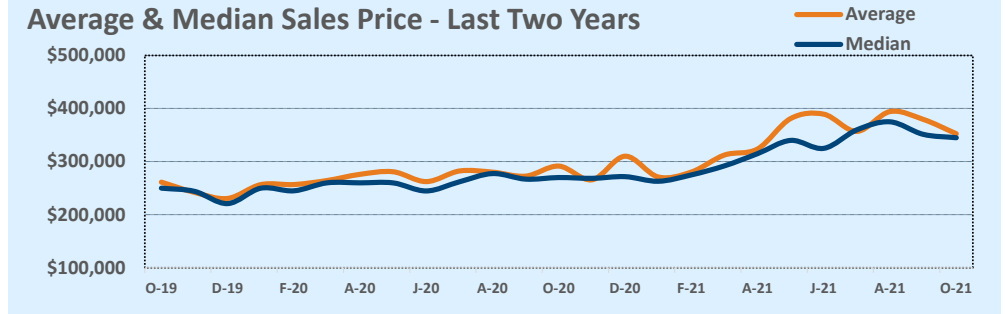
October 2021

Listings	This Month			Year-to-Date		
	Oct 2021	Oct 2020	Change	2021	2020	Change
Single Family Sales	59	55	+7.3%	592	495	+19.6%
Condo/TH Sales	--	--	--	--	--	--
Total Sales	59	55	+7.3%	592	495	+19.6%
New Homes Only	10	16	-37.5%	103	132	-22.0%
Resale Only	49	39	+25.6%	489	363	+34.7%
Sales Volume	\$20,801,490	\$16,036,758	+29.7%	\$204,193,077	\$135,750,100	+50.4%
New Listings	81	63	+28.6%	697	688	+1.3%
Pending	--	--	--	--	--	--
Withdrawn	1	2	-50.0%	19	59	-67.8%
Expired	1	2	-50.0%	19	59	-67.8%
Months of Inventory	1.4	2.0	-26.6%	N/A	N/A	--

Price Range	This Month			Year-to-Date		
	New	Sales	DOM	New	Sales	DOM
\$149,999 or under	--	2	4	8	16	32
\$150,000- \$199,999	3	1	63	39	32	40
\$200,000- \$249,999	--	7	44	50	74	36
\$250,000- \$299,999	10	10	18	128	120	45
\$300,000- \$349,999	13	12	9	124	119	29
\$350,000- \$399,999	20	12	16	155	98	18
\$400,000- \$449,999	10	2	3	59	54	12
\$450,000- \$499,999	9	7	29	59	33	28
\$500,000- \$549,999	2	1	13	18	13	10
\$550,000- \$599,999	2	3	21	12	10	61
\$600,000- \$699,999	6	2	51	17	9	72
\$700,000- \$799,999	--	--	--	3	5	18
\$800,000- \$899,999	2	--	--	6	1	38
\$900,000- \$999,999	2	--	--	4	4	11
\$1M - \$1.99M	2	--	--	7	3	66
\$2M - \$2.99M	--	--	--	3	--	--
\$3M+	--	--	--	5	1	18
Totals	81	59	21	697	592	31

Average	This Month			Year-to-Date		
	Oct 2021	Oct 2020	Change	2021	2020	Change
List Price	\$351,304	\$294,059	+19.5%	\$340,212	\$278,221	+22.3%
List Price/SqFt	\$209	\$164	+27.7%	\$181	\$150	+20.6%
Sold Price	\$352,568	\$291,577	+20.9%	\$344,921	\$274,243	+25.8%
Sold Price/SqFt	\$209	\$162	+29.1%	\$184	\$148	+24.6%
Sold Price / Orig LP	100.4%	99.0%	+1.4%	101.8%	98.5%	+3.3%
Days on Market	21	54	-61.4%	31	51	-39.6%

Median	This Month			Year-to-Date		
	Oct 2021	Oct 2020	Change	2021	2020	Change
List Price	\$340,000	\$275,000	+23.6%	\$309,450	\$260,990	+18.6%
List Price/SqFt	\$190	\$154	+23.5%	\$174	\$147	+18.2%
Sold Price	\$345,000	\$270,000	+27.8%	\$321,750	\$260,000	+23.8%
Sold Price/SqFt	\$198	\$157	+25.9%	\$178	\$145	+22.6%
Sold Price / Orig LP	100.0%	100.0%	+0.0%	100.0%	99.6%	+0.4%
Days on Market	8	29	-72.4%	8	26	-69.2%



Based on information from the Austin Board of REALTORS® (alternatively, from ACTRIS). Neither the Board nor ACTRIS guarantees or is in any way responsible for its accuracy. The Austin Board of REALTORS®, ACTRIS and their affiliates provide the MLS and all content therein "AS IS" and without any warranty, express or implied. Data maintained by the Board or ACTRIS may not reflect all real estate activity in the market.